

TechNote #CM15 OMNITREND®

Automatic migration of multiple databases (applies to OMNITREND version 2.35 and higher)

Introduction

The continued development of the OMNITREND software generally requires that you adapt the existing databases to the current software version. OMNITREND automatically migrates the database when you open the database. If several databases are in use, each database needs to be opened separately in OMNITREND to migrate it.

This TechNote describes how to automatically migrate multiple databases using a batch process.

Notes

- The batch process is only possible for databases in the 'MS Access' format (*.mdb).
- Parameters must be entered in capital letters.
- A migration can only be used to increase the database version (no backwards migration).
- The migration process may take a long time, especially if the "operating states" are configured in the database.
- OMNITREND should not be started during the migration.

Procedure

The migration of multiple databases can be started via the command line by calling up the OMNITREND.exe file.

The following parameters also need to be entered:

- /MERGE
- /SOURCE="Path to the databases"*.mdb and, optionally,
- /BACKUP="Path for backups"
- /VER="Database version number"

If the optional parameters, /BACKUP and /VER, are not entered, a backup of the databases is not created and the databases are migrated to the current database version. To display the current database version, open OMNITREND and select **Help / About...**

The migration process is documented in a LOG file. The LOG file records what databases were migrated and for which databases migration was aborted due to a fault. The LOG file is located in the following directory:

C:\Program Files\PRUFTECHNIK\OMNITREND\LogFiles

Example

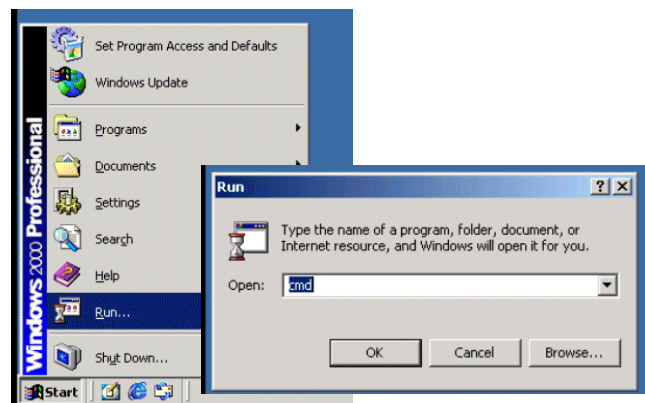
- The databases are located in the **C:\to_migrate** directory.
- They are to be migrated to version **1173**.
- In addition, a backup of each database is to be saved in the **C:\db_backups** directory.

1. Open the Windows start menu and click on **Run...**
2. In the command line, enter **cmd** and click on **OK**.
3. In the next window, change to the OMNITREND installation directory using the commands:

- **C:**
- **cd**
- **cd "Program Files\PRUFTECHNIK\OMNITREND"**

Start the migration using the following command:

- **OMNITREND.exe /MERGE /SOURCE=C:\to_migrate*.mdb /BACKUP=c:\db_backups\ /VER=173**



```
Administrator: C:\Windows\system32\cmd.exe
E:\>C:
C:\Users\chenk>cd \
C:\>cd "Program Files\PRUFTECHNIK\OMNITREND"
C:\Program Files\PRUFTECHNIK\OMNITREND>OMNITREND.exe /MERGE /SOURCE=c:\to_migrate\*.mdb /BACKUP=c:\db_backups\ /VER=173
```