

TechNote #CM21 OMNITREND®

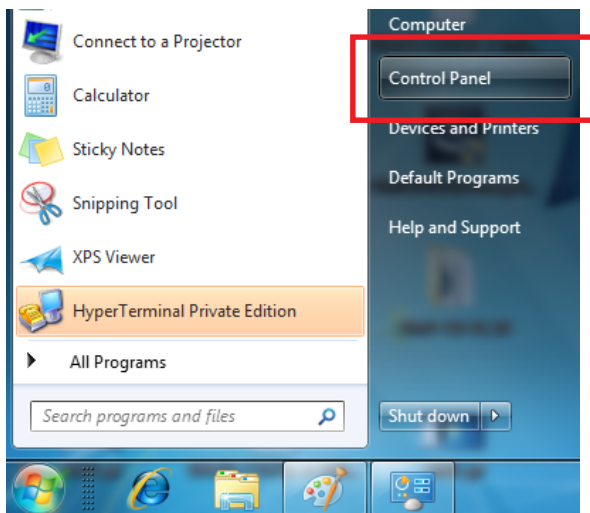
Automating a data import from an online system using a scheduled task under Windows 7 / Windows Vista

Introduction

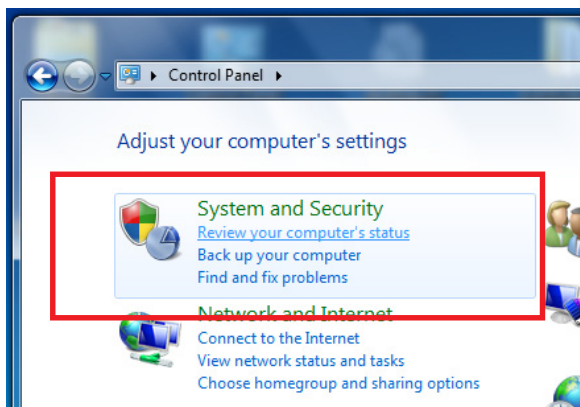
Measurement data from an online CMS can be automatically imported into the OMNITREND database using a scheduled task. This TechNote explains the procedure under Windows 7 and Windows Vista.

Procedure

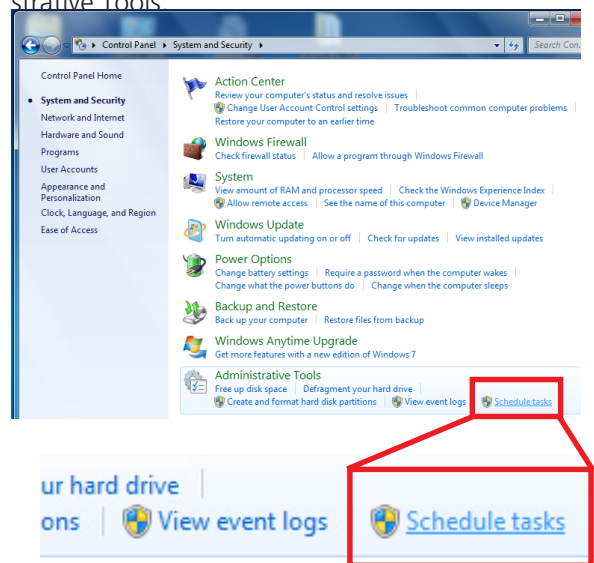
1. Open the **Control Panel** via the Windows start menu.



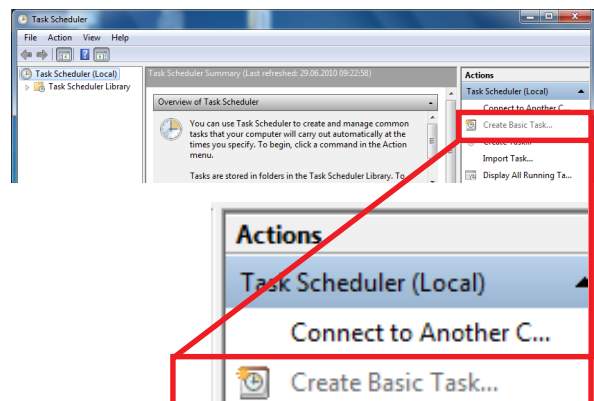
2. Select the **System and Security** category.



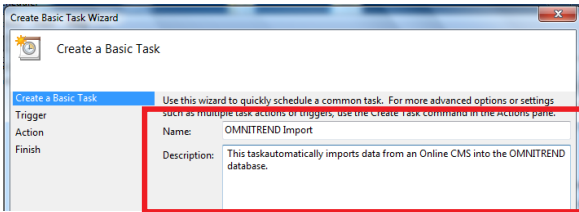
3. Click on the **Schedule tasks** link under Administrative Tools.



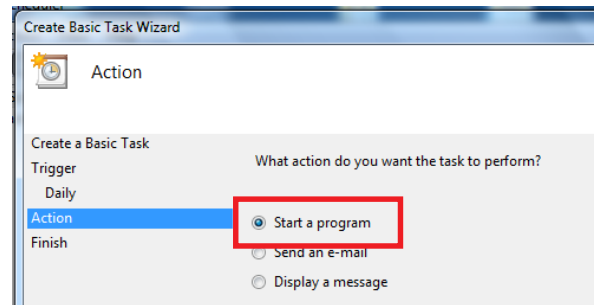
4. Under Actions, select **Create Basic Task**.



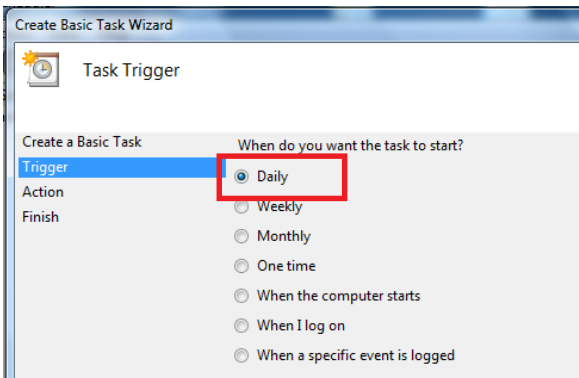
5. Give the task a **name** and enter a **description** if you wish.
 Click on <Next>.



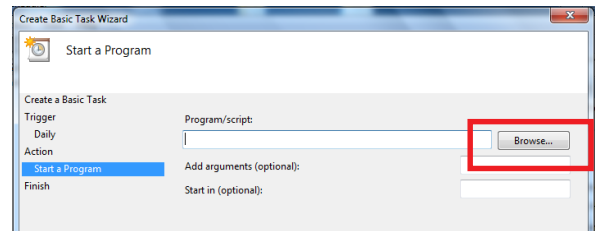
8. Select the **Start a program** task.
 Click on <Next>.



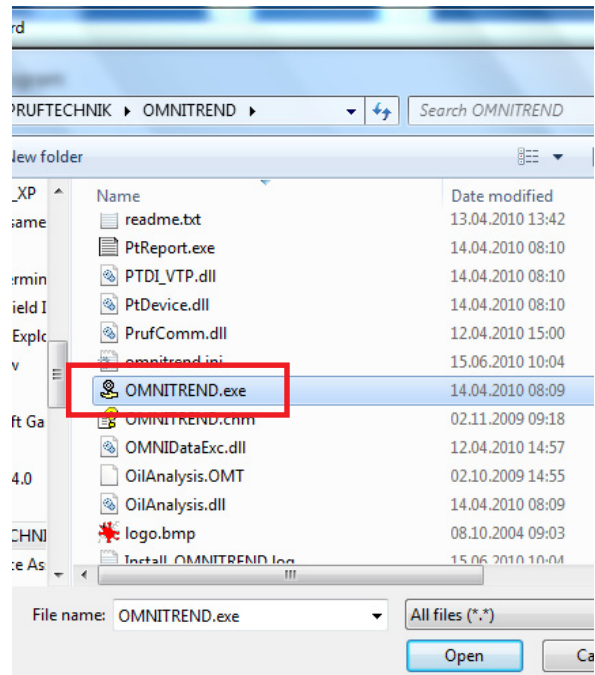
6. Set the interval or the start conditions (**Trigger**) for the task (e.g. Daily).
 Click on <Next>.



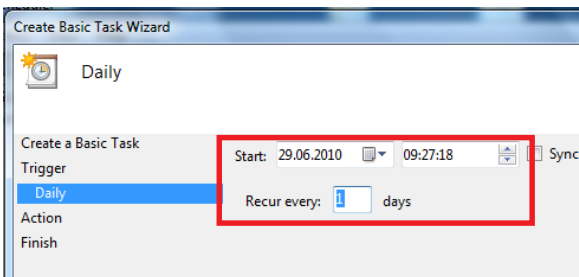
9. Click on **Browse...**



10. Navigate to the OMNITREND installation directory and select **OMNITREND.exe**.
 (Path: C:\Programs\Pruftechnik\OMNITREND)
 Click on <Open>.



7. Select the **Start** time and how often the task should **recur**.
 Click on <Next>.

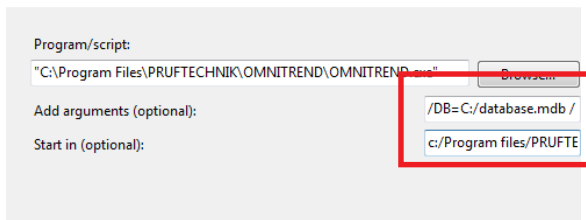


PRÜFTECHNIK Condition Monitoring OMNITREND® TechNote #CM21 - Page 3 of 4

11. Add the **arguments** and the **start directory** as follows:

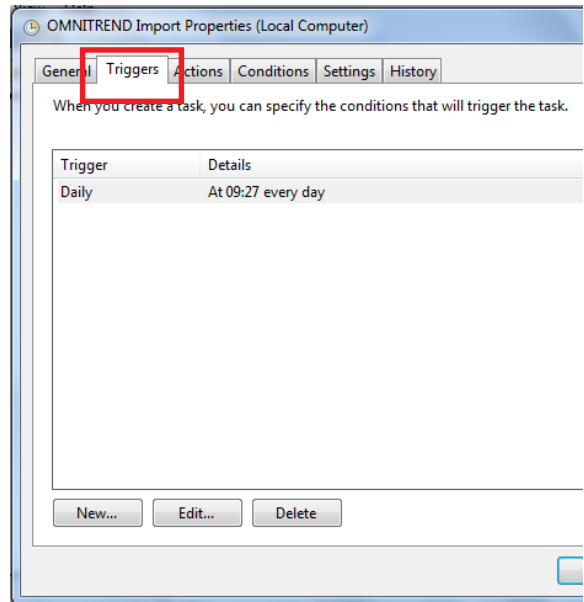
- a. *Arguments for *Access Database*:
 /DB=C:\Datenbank.mdb /NAME=guest • /
 PWD=•• /IMPORT=true
 Arguments for *SQL Database*:
 /DSN=ODBCName;UID=SQLUser;PWD=SQLPW/
 NAME=guest • /PWD=•• /IMPORT=true
- b. Start in: usually the OMNITREND installation path.

Click on <Next>.

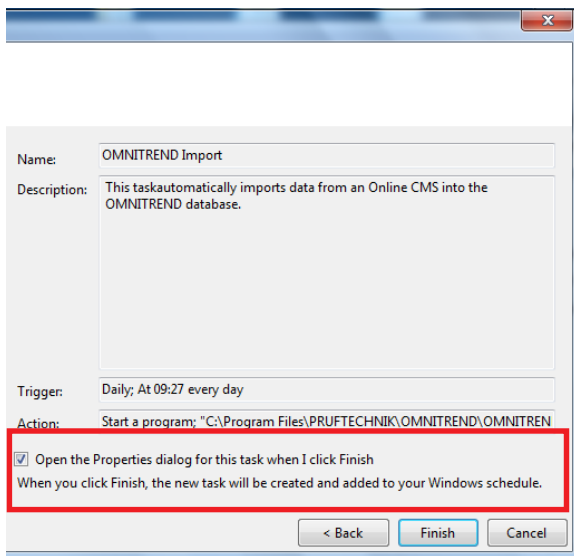


* The • character in the argument represents a blank space.

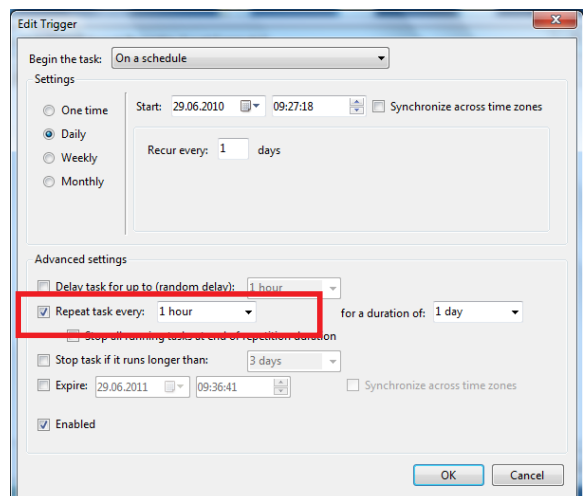
13. Open the **Triggers** tab and click on <Edit...>.



12. Activate the **Open the Properties dialog** option and click on <Finish>.

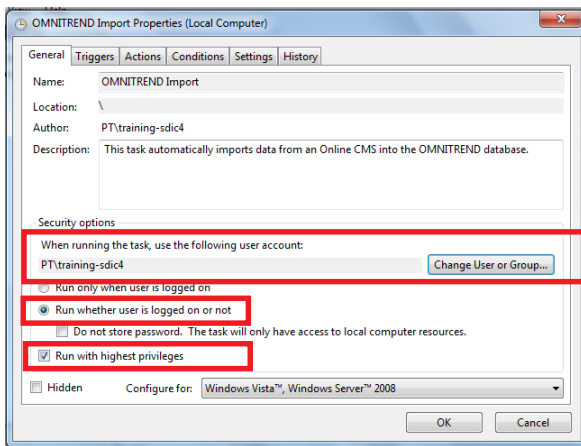


14. In the **Advanced settings** area, activate the **Repeat** option and set '1 hour'. Click on <OK>.

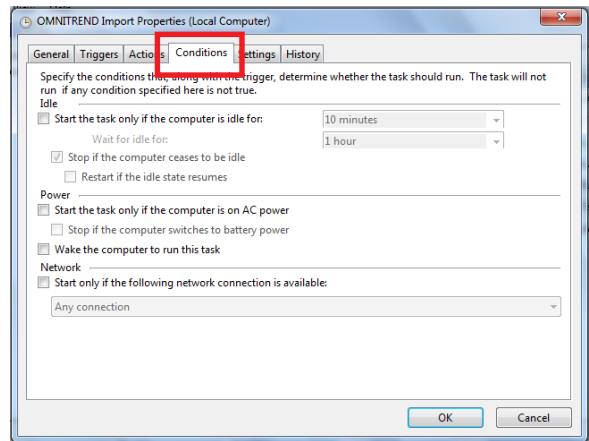


15. In the **General** tab

- Select the **user account** for executing the task if necessary. By default, the field contains the user account under which you logged in.
- Activate both options:
 - > **Run whether the user is logged on or not** and
 - > **Run with highest privileges.**



16. In the **Conditions** tab, you can define additional conditions.



17. Then click on <OK> and enter your Windows password to save the settings.

